



# Fragmented Comet 73P/Schwassmann–Wachmann 3

Ariel Graykowski<sup>1</sup> and David Jewitt<sup>1,2</sup>

<sup>1</sup>Department of Earth, Planetary and Space Sciences, UCLA, 595 Charles Young Drive East, Los Angeles, CA 90095-1567, USA; [ajgraykowski@ucla.edu](mailto:ajgraykowski@ucla.edu)

<sup>2</sup>Department of Physics and Astronomy, University of California at Los Angeles, 430 Portola Plaza, Box 951547, Los Angeles, CA 90095-1547, USA

Received 2019 May 8; revised 2019 June 29; accepted 2019 July 3; published 2019 August 19

## Abstract

Comet 73P/Schwassmann–Wachmann 3 has been observed to fragment on several occasions, yet the cause of its fragmentation remains poorly understood. We use previously unpublished archival *Hubble Space Telescope* data taken in 2006 to study the properties of the primary fragment, 73P-C, in order to constrain the potential fragmentation mechanisms. Currently the literature presents a wide range of measured rotational periods, some of which suggest that the nucleus might have split due to rotational instability. However, we find the most likely value of the rotation period to be  $10.38 \pm 0.04$  hr ( $20.76 \pm 0.08$  hr if double-peaked), much longer than the critical period for rotational instability for any reasonable nucleus density and shape, even in the absence of tensile strength. We also find strong, cyclic photometric variations of about  $0.31 \pm 0.01$  mag in the central light from this object, while similar variations with a smaller range are apparent in the surrounding dust coma. These observations are compatible with rotational modulation of the mass-loss rate and with dust having a mean outflow speed of  $107 \pm 9$  m s<sup>-1</sup>. Finally, we also estimate the radius of the nucleus to be  $0.4 \pm 0.1$  km accounting for dust contamination and assuming a geometric albedo of 0.04.

**Key words:** comets: general – comets: individual (73P/Schwassmann–Wachmann 3) – Kuiper belt: general

## 1. Introduction

Comet 73P/Schwassmann–Wachmann 3 (hereafter 73P) is a Jupiter family comet with a semimajor axis  $a = 3.063$  au, orbital inclination  $i = 11^\circ.4$ , and eccentricity  $e = 0.692$ . The comet was first reported to have fragmented into at least four pieces on 1995 September 12 (Crovisier et al. 1995), shortly before its perihelion passage at 0.94 au on September 22. While fragments A and D were not seen during its following apparition, fragments B and C are long-lived, continuing to appear in subsequent apparitions every 5.36 yr. Fragment 73P-C is the brightest of the fragments and is also the leading fragment in the orbit. These characteristics generally describe the primary fragment of a split comet according to Boehnhardt (2004), so 73P-C is therefore considered the primary nucleus. While its 2001 apparition provided a less than ideal observing geometry, the comet approached to within 0.08 au of the Earth in 2006, providing an excellent opportunity for high resolution observations with the *Hubble Space Telescope* (HST). 73P fragmented again during this apparition, releasing fragments G, H, J, L, M, and N, with fragments B and G famously shedding dozens of smaller pieces (Fuse et al. 2007 and Weaver et al. 2008).

Potential causes of cometary fragmentation include tidal disruption (Asphaug & Benz 1994), rotational instability (Jewitt 1997), internal build-up of thermal gas pressure (Samarasinha 2001), and impact induced fragmentation (Sekanina 1997 and Boehnhardt 2004). In the case of 73P-C, tidal disruption can be discounted since the orbit of the comet does not pass within the Roche spheres of any of the major planets or the Sun. Impacts are intrinsically unlikely and offer an even less credible explanation given that the comet has exhibited multiple breakup episodes in different orbits. Estimates of the rotational period of 73P-C (see Table 1) are widely spread over the range from 3.019 (Drahus et al. 2010) to 27.2 hr (Storm et al. 2006). The lower end of this range is suggestive of fragmentation due to rotational instability

(Marzari et al. 2011). However, the upper end of the range is completely inconsistent with this possibility.

In this paper, our motivation is to characterize 73P using the highest resolution data and to obtain a deeper understanding of how 73P fragmented. We focus on 73P-C and examine *HST* images from 2006 April and measure the rotation period of 73P-C in order to reduce the ambiguity behind the cause of its fragmentation.

## 2. Observations

The images were taken under *HST* program GO 10625, with P. Lamy as the principal investigator using the Advanced Camera for Surveys (ACS) in the High Resolution Channel (HRC). The field of view of the HRC is  $29'' \times 26''$  with a pixel scale of  $0''.028 \times 0''.025$  pixel<sup>-1</sup> (Ford et al. 1998 and Ryon et al. 2019). The observations started on 2006 April 10, 21:35 UT and ended 2006 April 11, 19:06 UT, providing a span of  $\sim 21.5$  hr. A total of eight orbits were scheduled to observe 73P-C. Six of the eight orbits consisted of observations that were identical in filters, the number of images taken in each filter, and the exposure times. In each orbit, two images were taken with the F475 filter, two with F555, six with F606, and four with F625. The first orbit is almost identical, but features shorter exposure times for the two images taken in the F475 filter. The eighth orbit also features shorter exposure times of the two images taken in F475, as well as the two images in F555 and the four images in F625 in order to provide time for two additional images taken in the F814 filter. We focused our analysis on the filters consistent between each orbit. Orbits four and seven are not available on the Hubble Legacy Archive, leaving a total of 84 DRZ images (calibrated, geometrically corrected, dither-combined images created by AstroDrizzle in units of electrons s<sup>-1</sup>) that were analyzed in this work (Table 2). The observing geometry is listed in Table 3 for the two days on which the comet was observed.

**Table 1**  
Reported Periods of 73P-C

Rotation Period (hr)	Author(s)	Method
3.019 $\pm$ 0.001, 3.349 $\pm$ 0.002, 3.392 $\pm$ 0.002	Drahus et al. (2010)	HCN production rate. The method produces many possible periods, including solutions in the range of 10.174–13.567 hours, but is insensitive to periods >14 hr.
3.2 $\pm$ 0.2	Toth et al. (2006)	Photometry
3.5–4.0	Toth et al. (2008)	Photometry
8.8 $\pm$ 0.3, 13.2 $\pm$ 0.3, 27.2 $\pm$ 0.3	Storm et al. (2006)	Dust morphology
>10.0	Nolan et al. (2006)	Radar
>15	Dykhuis et al. (2012)	Dust morphology

**Table 2**  
Image Information

Filter	$\lambda^a$	FWHM <sup>b</sup>	$N^c$	$t^d$
F475	4760	1458	12	10–20
F555	5346	1193	12	20
F606	5907	2342	36	180
F625	6318	1442	24	20

**Notes.**<sup>a</sup> The central wavelength of the filter in Å.<sup>b</sup> The full width at half maximum of the filter in Å according to the Space Telescope Science Institutes’ instrument handbook.<sup>c</sup> Number of images.<sup>d</sup> Integration time, seconds.**2.1. Nucleus Measurements**

The morphology of the parent body, 73P-C, can be seen in Figure 1. It displays an obvious coma elongated toward the southwest direction, approximately aligned with the antisolar direction (marked  $-\odot$ ). We used aperture photometry to measure the apparent magnitude in the 84 images and accounted for the zero-point of each filter given by [http://www.stsci.edu/hst/acs/analysis/zeropoints/old\\_page/localZeropoints](http://www.stsci.edu/hst/acs/analysis/zeropoints/old_page/localZeropoints). For the nucleus measurements, we chose an aperture radius of  $\sim 0''.13$  ( $\sim$ FWHM of the PSF), which corresponds to a distance of 27 km at the comet. We then subtracted the background flux caused by the sky and coma through an annulus contiguous with the aperture and extending out another  $\sim 0''.26$ . In order to analyze the data from each filter altogether, we calculated the average colors with respect to filter F555 (equivalent to the Johnson *V* filter) and used the colors to shift the magnitudes in each filter such that they are equivalent to the F555 filter (Table 4). The nucleus aperture magnitudes are plotted as a function of time in Figure 2.

**2.2. Coma Measurements**

Next, we compared the light curve of the central aperture (containing the nucleus and near-nucleus dust) to light curves of the coma annuli (containing only dust). We used the same aperture radius to obtain the light curve for the nucleus. We then measured the flux within the coma within two annuli extending from  $\sim 0''.13$  to  $\sim 0''.65$  and from  $\sim 0''.65$  to  $\sim 1''.17$ . Instead of subtracting the background flux from an annulus immediately outside these regions, we only subtracted the flux from the distant sky background. For this purpose, we experimented to select an annulus with inner and outer radii

of  $\sim 5''.7$  and  $\sim 6''.5$ , respectively, and subtracted this flux from all measurements. The aperture and annuli are drawn on an image of the comet in Figure 3. Colors were again calculated in the coma regions with respect to filter F555 as listed in Table 4, with error estimates representative of the signal-to-noise ratio (S/N). The S/N decreased further out in the coma, where the sky background had a larger effect. The resulting apparent magnitudes are plotted in Figure 4.

**3. Results****3.1. Rotational Period of the Nucleus**

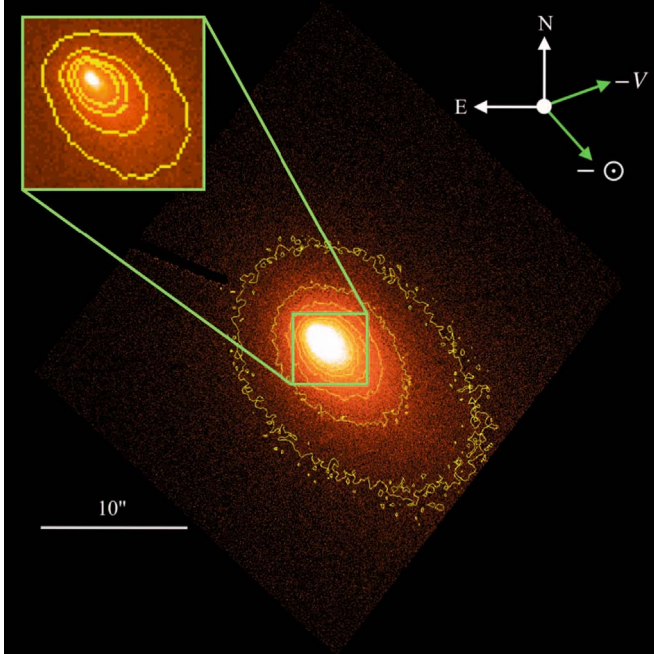
We measured the rotation period of the nucleus by fitting a light curve to the time-varying magnitudes. For convenience of presentation, the time plotted in Figures 2 and 4 was calculated from

$$T = (\text{JD} - 2453836.399) \times 24, \quad (1)$$

where  $T$  is time in hours and JD is the Julian date obtained from the image header. We used IRAF’s phase dispersion minimization (PDM) program to search for likely periods in the data, and used these values as a guide to create the best-fit sinusoid curves by least squares. We fit the data from each filter separately, as well as combined by converting the F475, F606, and F625 filters to the F555 filter according to the colors in Table 4. We found that all five of these fits resulted in the same period within two standard deviations. Therefore, for simplicity, we only show the fit for the combined data in this work. Figure 2 shows the best fit for the light curve of the nucleus. This sinusoidal least-squares fitted curve has a single-peaked period  $P = 10.38 \pm 0.04$  hr. The light curves of most solar system small bodies are dominated by variation in the cross-section due to aspherical shape, rather than by surface albedo variations (Burns & Tedesco 1979). In these cases the light curves are doubly periodic (two maxima and minima per rotation) owing to rotational symmetry. For 73P-C, this would imply a rotational period  $2P = 20.76 \pm 0.08$  hr. This relatively long period is consistent with a lower limit  $P > 10$  hr set using radar observations by Nolan et al. (2006), but disagrees with shorter periods obtained using less direct methods (Table 1). Incomplete sampling of the light curve leads to aliasing in the period determination and, therefore, we cannot exclude the possibility that other periods might fit the data. The shortest plausible period from our PDM analysis is  $P = 5.01$  hr and thus we can rule out shorter periods proposed by Drahus et al. (2010) and Toth et al. (2006, 2008) listed in Table 1.

**Table 3**  
Observing Geometry

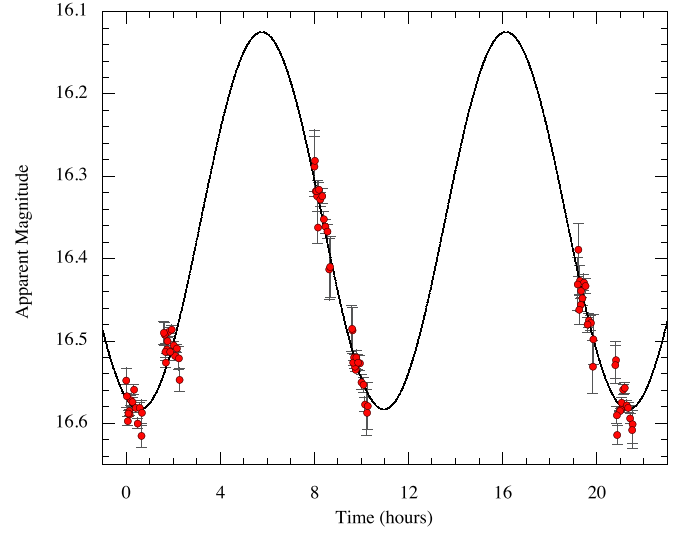
UT Date <sup>a</sup>	$\Delta T_p^b$	$\nu^c$	$r_H^d$	$\Delta^e$	$\alpha^f$	$\theta_{-\odot}^g$	$\theta_{-V}^h$	$\delta_{\oplus}^i$
2006 Apr 10	−60	2.9	1.240	0.292	31.2	222.1	290.6	−30.8
2006 Apr 11	−59	2.9	1.231	0.283	31.8	221.0	290.4	−31.5

**Notes.**<sup>a</sup> Date of observation at 22:00 UTC.<sup>b</sup> Number of days from perihelion (UT 2006 June 9). Negative numbers indicate pre-perihelion observations.<sup>c</sup> True anomaly, in degrees.<sup>d</sup> Heliocentric distance, in astronomical units.<sup>e</sup> Geocentric distance, in astronomical units.<sup>f</sup> Phase angle, in degrees.<sup>g</sup> Position angle of the projected antisolar direction, in degrees.<sup>h</sup> Position angle of the projected negative heliocentric velocity vector, in degrees.<sup>i</sup> Angle between Earth and target orbital plane, in degrees.**Figure 1.** Sample single image of 73P taken with *HST*'s ACS HRC instrument in the F555 filter with a 20 s exposure on 2006 April 10. The pixel scale is  $0''.028 \times 0''.025 \text{ pixel}^{-1}$ . At a distance of 0.288 au from the Earth, 1'' corresponds to 208.9 km and one pixel subtends  $\sim 5.2$  km. The  $5''.2 \times 4''.0$  inset magnifies the area around the nucleus stretched to minimize the appearance of saturation. The projected antisolar direction and negative velocity are represented by the vectors labeled  $-\odot$  and  $-V$  respectively.**Table 4**  
Nucleus and Coma Colors<sup>a</sup>

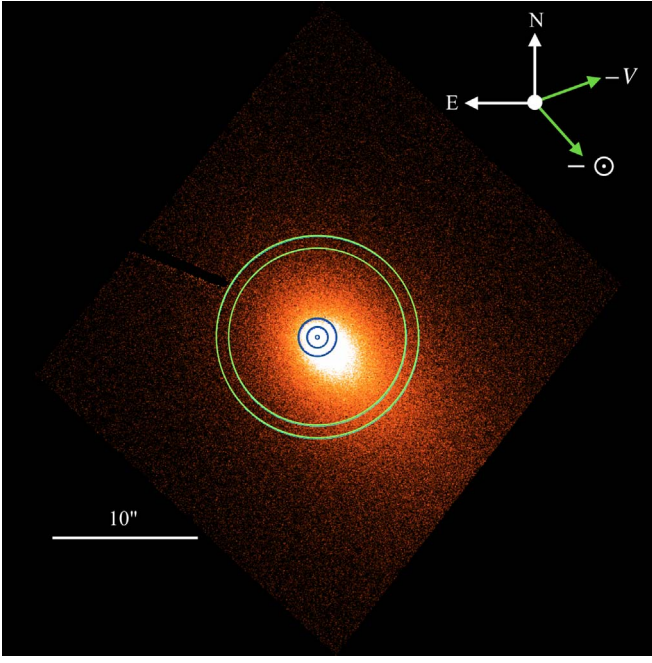
Color	Nucleus (0–27 km)	Coma (27–136 km)	Coma (136–245 km)
F475–F555	$0.43 \pm 0.04$	$0.42 \pm 0.18$	$0.42 \pm 0.26$
F555–F606	$0.25 \pm 0.04$	$0.26 \pm 0.05$	$0.26 \pm 0.06$
F555–F625	$0.47 \pm 0.04$	$0.49 \pm 0.04$	$0.49 \pm 0.06$

**Note.**<sup>a</sup> In magnitudes.**3.2. Dust Outflow Speed**

We next repeated the analysis for the light curves of the nucleus and coma regions measured from the sky-subtraction technique. Specifically, we aim to detect a phase lag in the light

**Figure 2.** 73P-C apparent magnitude vs. time plotted as red circles with  $1\sigma$  error bars. The solid line shows a best-fit sinusoidal light curve with a period  $P = 10.38 \pm 0.04$  hr and a rotation period  $2P = 20.76 \pm 0.08$  hr.

curves from the three apertures caused by the finite speed of outflow of the dust. Keeping the same period found in our best fit of the nucleus light curve in the previous section, we fitted curves with the light-curve period  $P = 10.38 \pm 0.04$  hr to the phase-folded data in Figure 4. The figure shows that there is a phase lag from the nucleus to the dust regions of the coma. The fitted phase lags are listed in Table 5. From the central aperture to the inner coma annulus there is a  $\Delta T = 0.21 \pm 0.05$  hr lag, while from the center to the outer coma annulus the lag is  $\Delta T = 0.46 \pm 0.08$  hr. Figure 5 shows the phase lag versus the effective radius of each photometry annulus, computed by determining the center of light of the photons hitting the CCD in each aperture or annulus according to the surface brightness profile plotted in Figure 6. With a surface brightness  $\propto \theta^{-1}$  (where  $\theta$  is the radial distance from the center), the effective radius,  $\theta_e$ , is given simply by  $\theta_e = (\theta_i + \theta_o)/2$ , where  $\theta_i$  and  $\theta_o$  are the inner and outer radii of each annulus. The speed of the dust,  $v_g$ , is given by the gradient of a straight line fitted to the data in Figure 5. We find  $v_g = 107 \pm 9 \text{ m s}^{-1}$ . At this speed, dust released from the nucleus would escape from the central photometry aperture of projected radius  $\theta_o = 27$  km (Table 5) in a time  $t \sim \theta_o/v_g \sim 250$  s. This time is very short compared to the nucleus rotational period and, therefore, we can neglect



**Figure 3.** Same as Figure 1 but with blue circles to show photometric apertures with radii of 27, 136, and 245 km and green circles to represent the inner and outer edges of the background annulus corresponding to radii of  $\sim 1190$  and 1360 km.

the effects of averaging in the interpretation of the light-curve data.

### 3.3. Size of the Nucleus

We converted from apparent to absolute magnitude,  $H_V$ , defined as the magnitude corrected to unit heliocentric and geocentric distance ( $r_H$  and  $\Delta$ , respectively) and to phase angle  $\alpha = 0^\circ$ . For the apparent magnitude,  $m_V$ , the correction is

$$H_V = m_V - 5 \log_{10}(r_H \Delta) - f(\alpha), \quad (2)$$

where  $f(\alpha)$  is the phase function representing the angular dependence of the scattered sunlight at phase angle  $\alpha$  in degrees. We assume a linear phase function

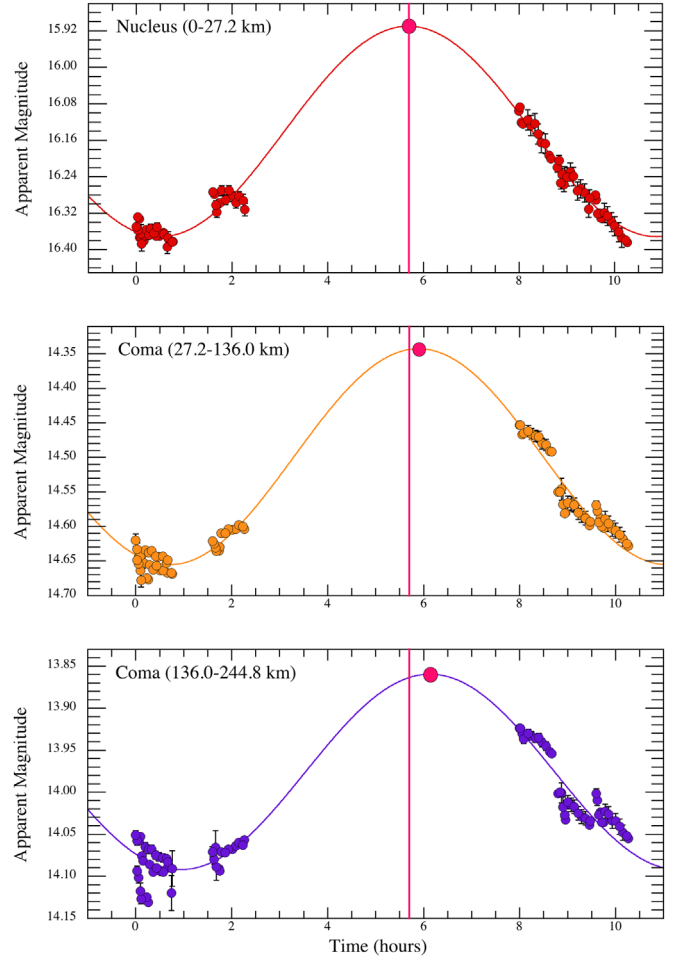
$$f(\alpha) = (0.046 \pm 0.017)\alpha \quad (3)$$

based on measurements of 37 Jupiter family comets reported by Kokotanekova et al. (2017). We find the absolute magnitude of 73P-C to be  $H_V = 17.3 \pm 0.1$ .

We estimated the cross-section of the nucleus using

$$C_e = \frac{\pi(2.25 \times 10^{16})}{p_V} 10^{-0.4[H_V - V_\odot]}, \quad (4)$$

where  $p_V$  is the geometric albedo, which we assume to be 0.04 (Hartmann et al. 1987; Lamy et al. 2004; Fernández et al. 2013),  $H_V$  is the absolute magnitude and  $V_\odot \sim -26.77$  is the apparent magnitude of the Sun. The effective nucleus radius is then  $r_n = \sqrt{(C_e/\pi)}$  and we find  $r_n = 1.2 \pm 0.1$  km. This is consistent with the pre-breakup radius  $r_n \sim 1$  km as reported by Sekanina (1989) and  $r_n \sim 1.1$  km as reported by Boehnhardt et al. (1999). In both of these studies, as well as our calculation of the radius, coma contamination was not accounted for, and therefore these values all represent upper limits to the size of the nucleus.



**Figure 4.** Phase-folded light curves of the nucleus (top), the coma with inner and outer annulus radii of 27 and 136 km (middle), and the coma with inner and outer annulus radii of 136 and 245 km (bottom). The magenta, vertical line is placed at the peak of the nucleus light curve, and is unmoved in the subsequent coma light curves. The magenta circle marks the fitted peak of each light curve. A phase shift is clearly visible from the nucleus to greater distances in the coma.

**Table 5**  
73P-C Nucleus and Coma Light-curve Phase and Phase Shift

Aperture	$\theta_i^a$	$\theta_o^b$	$\theta_e^c$	$ \Delta \text{Phase} ^d$
1	0	27	13	0
2	27	136	82	$0.21 \pm 0.05$
3	136	245	190	$0.46 \pm 0.08$

**Notes.**

<sup>a</sup> Inner radius of annulus in kilometers,  $1'' \sim 209$  km.

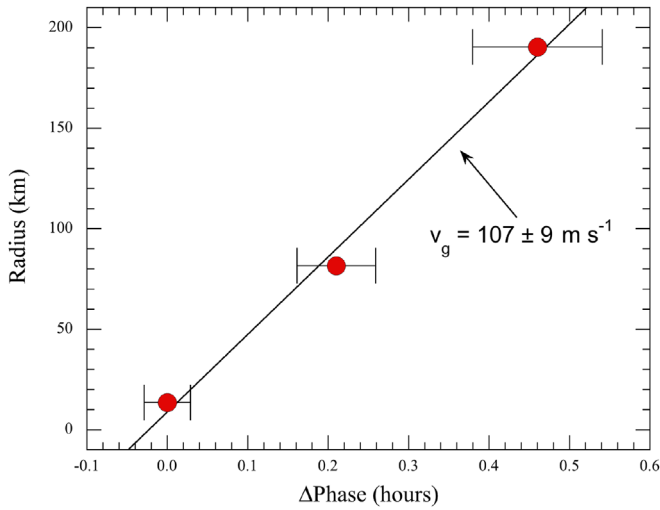
<sup>b</sup> Outer radius of annulus in kilometers.

<sup>c</sup> Effective radius of annulus in kilometers.

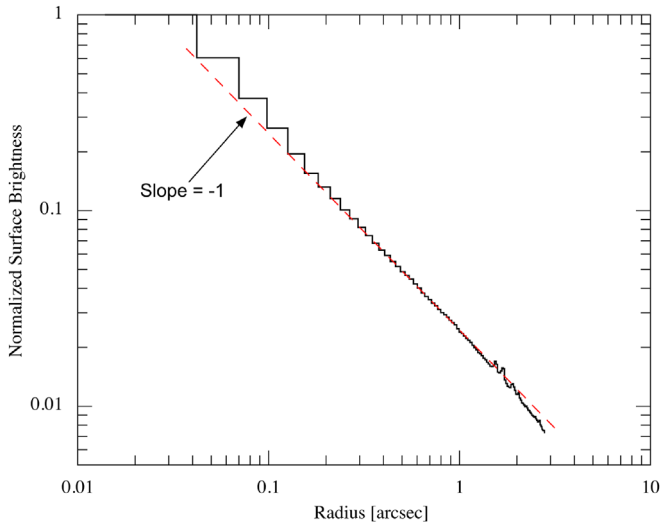
<sup>d</sup> Phase lag relative to the light curve of the nucleus (hr).

Toth et al. (2005) accounted for coma contamination by modeling the expected brightness profile of the coma and nucleus, and calculating the residual flux associated with just the nucleus. From this, Toth et al. (2005) find that, as of 2001 November 26, 73P-C had decreased in radius to  $r_n = 0.68 \pm 0.04$  km (i.e., to only 25% of the original volume). However, the smaller size is likely a result of accounting for dust contamination rather than the nucleus physically shrinking over time. We conducted a similar





**Figure 5.** Relative phase shift plotted against the distance from the center of the nucleus, where the reference phase measured from the light curve of the nucleus is set to zero. From left to right, the red points then represent the relative phase at the nucleus, 82 km from the nucleus into the coma, and 190 km from the nucleus into the coma. The error bars represent the  $1\sigma$  error on the phase obtained from each fit. From this, we obtain a dust speed  $v_g = 107 \pm 9 \text{ m s}^{-1}$ .



**Figure 6.** Surface brightness profile of 73P. The red line represents a surface brightness profile  $\propto r^{-1}$ , where  $r$  is the radial distance from the center of the nucleus. The surface brightness profile follows this line closely except  $r \lesssim 0''.15$ , where the PSF has an effect, and  $r \gtrsim 1''.5$ , where the background subtraction systematics are important.

analysis by extrapolating the surface brightness profile in the coma to the center aperture. We subtracted the estimated flux of the coma within the center aperture from the flux value we measured using aperture photometry. The residual flux represents that of the isolated nucleus. In the measured region of the coma, Figure 6 shows the surface brightness profile  $\propto r^{-1}$ , where  $r$  is the radial distance from the center of the nucleus. This implies that the integrated flux within an annulus is simply proportional to the width of the annulus, i.e., flux  $\propto r_o - r_i$ . Therefore, if there is no nucleus present, we expect to find flux ratios in the different apertures  $A1/A2 = 27/(136 - 27) = 0.25$  and  $A1/A3 = 27/(245 - 136) = 0.25$  (see Table 5). Instead, the average flux measured through the center aperture is  $\sim 29\% \pm 2.5\%$  of the average flux in the indicated

coma annuli. The residual flux corresponds to an apparent magnitude  $m_V \sim 18.7 \pm 0.7$ , absolute magnitude  $H_V \sim 19.7 \pm 0.7$ , and radius  $r_n \sim 0.4 \pm 0.1 \text{ km}$ . This estimate (diameter  $0.8 \pm 0.2 \text{ km}$ ) is comparable, within the uncertainties, to Arecibo (12.6 cm) and Goldstone (3.5 cm) radar data reported to show that fragment C is at least 1 km in diameter (Nolan et al. 2006).

## 4. Discussion

### 4.1. Stability of the Nucleus Rotation

Is rotational instability a plausible mechanism of fragmentation for 73P? We compare the minimum period we derived with the critical rotational period of the body given by

$$P_C = k \left[ \frac{3\pi}{G\rho} \right]^{\frac{1}{2}}, \quad (5)$$

where  $G$  is the gravitational constant,  $\rho$  is the density, and  $k$  is a dimensionless constant that depends on the shape of the body. For a sphere,  $k$  reduces to 1. We assume that a prolate shaped nucleus generates the light curve, so  $k = a/b$ , where  $a > b$ . We also assume a density  $\rho = 600 \text{ kg m}^{-3}$ , as representative for comets (Britt et al. 2006). With photometric variations of  $\sim 0.31 \pm 0.01 \text{ mag}$  in the nucleus, we infer  $k = 1.33 \pm 0.01$ , and a critical period  $P_C = 5.67 \pm 0.04 \text{ hr}$  for a prolate spheroid of this density, which is far shorter than our 10.38 hr best-fit single-peaked light-curve period. Therefore, we can confidently rule out the possibility of breakup of a strengthless nucleus due to rotational instability.

### 4.2. Coma Dust Speed and Particle Size

From the measured speed of the dust in the coma, we can estimate the average dust grain size and mass-loss rate from the nucleus. We assume an inverse relationship between ejection velocity and grain size

$$v = v_0 \beta^{\frac{1}{2}}, \quad (6)$$

where  $\beta$  is the ratio of the acceleration due to solar radiation pressure to the acceleration due to solar gravity and  $v_0$  is the reference velocity for a particle  $1 \mu\text{m}$  in radius (Lisse et al. 1998; Reach et al. 2000; Ishiguro et al. 2007) and  $\beta \sim 1/a$ , where  $a$  is the grain radius in  $\mu\text{m}$ . We then can evaluate the average velocity of particles by weighting the velocity by the size distribution and the cross-section of the particles. The average velocity is

$$\bar{v} = \frac{\int_{a_{\min}}^{a_{\max}} v_0 \pi a^{\frac{3}{2}} n(a) da}{\int_{a_{\min}}^{a_{\max}} \pi a^2 n(a) da}, \quad (7)$$

where  $n(a)da$  is the size distribution of dust. This power-law distribution is defined as

$$n(a)da = \Gamma a^{-\gamma} da, \quad (8)$$

where  $\Gamma$  is a constant that does not affect the resulting velocity, and we take  $\gamma = 3.5$ , as found in other active bodies (e.g., Jewitt et al. 2014). Then, assuming  $a_{\max} \gg a_{\min}$ , the resulting

average velocity is

$$\bar{v} = \frac{v_0}{2\sqrt{a_{\min}}}, \quad (9)$$

with  $a_{\min}$  expressed in  $\mu\text{m}$ .

Equation (9) shows that, with these assumptions, the average velocity only depends on the minimum particle size. The smallest particles that can be seen in the visible spectrum are limited by diffraction. The scattering efficiency of a particle depends on the size parameter,  $x = 2\pi a/\lambda$ , where  $\lambda$  is the wavelength of observation. The scattering efficiency approaches 0 as  $x \rightarrow 0$ , and oscillates around and approaches unity when  $x > 1$  (van de Hulst 1957). In the visible spectrum ( $\lambda \sim 0.5 \mu\text{m}$ ),  $x = 1$  corresponds to  $a \sim 0.1 \mu\text{m}$ . These tiny particles are likely to be dynamically well coupled to the gas and ejected with a velocity that is comparable to the average thermal velocity, given by integrating the Maxwell Boltzmann distribution of particle speeds;

$$v_{\text{th}} = \sqrt{\frac{8k_B T}{\pi m}}. \quad (10)$$

Here the spherical blackbody temperature at  $\sim 1.23$  au from the Sun is  $T \sim 251$  K,  $k_B$  is the Stefan–Boltzmann constant, and  $m$  is the mass of an  $\text{H}_2\text{O}$  molecule. Equation (10) gives  $v_{\text{th}} \sim 550 \text{ m s}^{-1}$ , which is our best estimate of the outflow speed in gas. If we assume that the smallest particles,  $a \sim 0.1 \mu\text{m}$ , are dynamically well coupled to the gas and traveling at  $v_{\text{th}}$ , then the mean speed  $\bar{v} \sim 107 \pm 9 \text{ m s}^{-1}$  corresponds to effective particle radius  $a \sim 3 \mu\text{m}$ , by Equation (9).

This particle size estimate is clearly approximate, given that we do not know the actual gas flux from the nucleus and that  $v_{\text{th}}$  is only an approximation to the outflow speed. However, the sunward extent of the coma provides an independent estimate of the particle ejection speed (Jewitt 1991). A particle launched toward the Sun and experiencing a constant antisolar acceleration of magnitude  $\beta g_\odot$  will reach a turnaround distance given by

$$L = \frac{v^2}{2\beta g_\odot}. \quad (11)$$

Substituting  $v = v_0 \beta^{1/2}$ , Equation (11) simplifies to  $L = v_0^2/(2g_\odot)$ , where  $g_\odot = 4 \times 10^{-3} \text{ m s}^{-2}$  is the solar gravity at  $r_H = 1.23$  au. We see from Figure 1 that the sunward angular extent of the coma is  $\sim 10''$  corresponding to  $2 \times 10^6 \text{ m}$  at the comet, neglecting the effects of projection. We infer  $v_0 \sim (2g_\odot L)^{1/2} \sim 125 \text{ m s}^{-1}$ , corresponding to the speed of a  $1 \mu\text{m}$  particle. This is close enough, given the many approximations involved, that we consider this independent estimate to be in strong support of the result from aperture photometry.

#### 4.3. Mass-loss Rate

With the effective velocity in hand, a simple mass-loss rate estimate can be obtained from

$$\frac{dM}{dt} = \frac{4\rho \bar{a} C_e \bar{v}}{3d}, \quad (12)$$

where  $\rho$  is the dust grain density, which we assume again to be  $600 \text{ kg m}^{-3}$ ,  $\bar{a}$  is the average particle radius,  $C_e$  is the total cross-section of all the particles in the measured portion of the coma as given by Equation (4),  $\bar{v}$  is the average velocity of particles in the coma, and  $d$  is the distance traveled. For  $d$ , we use the distance from the nucleus to the midpoint of the outer defined region of the coma,  $d \sim 190 \text{ km}$ . Substituting into Equation (12) gives the order of magnitude average mass-loss rate  $dM/dt \sim 50 \pm 17 \text{ kg s}^{-1}$ , where the error is largely dominated by the error on particle size. Finally, we solved the energy balance equation for a patch of perfectly absorbing ice exposed at the subsolar point on the nucleus of 73P. The equilibrium mass-loss rate at  $r_H = 1.23 \text{ au}$  is  $f_s = 2.9 \times 10^{-4} \text{ kg m}^{-2} \text{ s}^{-1}$  (ice temperature 202 K). The measured sublimation rate can thus be supplied by a circular patch of area

$$\pi r^2 = \frac{1}{\delta f_s} \frac{dM}{dt}, \quad (13)$$

where  $\delta$  is the dust-to-ice mass ratio. If  $\delta$  is equal to unity, then  $\pi r^2 \sim 0.17 \pm 0.05 \text{ km}^2$  and  $r \sim 0.2 \text{ km}$ . On a  $0.4 \text{ km}$  radius spherical nucleus, this patch corresponds to an active fraction  $f_A = \pi r^2/4\pi r_n^2 \sim 0.08$ . Published estimates of  $\delta$  vary considerably, but there is now a consensus that  $\delta > 1$ . For example, Reach et al. (2000) found  $\delta \sim 10$ –30 in 2P/Encke, while Fulle et al. (2017) find  $\delta = 7.5$  for Comet 67P/Churyumov–Gerasimenko. These larger values would imply an active patch of radius  $r \sim 0.04$ – $0.08 \text{ km}$  on 73P-C. Evidently, very localized activity on 73P can drive the coma.

## 5. Conclusion

We analyzed 84 images of comet 73P/Schwassmann–Wachmann 3 taken with *HST* on UT 2006 April 10 and 11 to find the following.

1. The best-fit light-curve period is  $P = 10.38 \pm 0.04 \text{ hr}$  ( $2P = 20.76 \pm 0.08 \text{ hr}$  for a double-peaked light curve, as expected for an irregularly shaped body). This eliminates the possibility of rotational instability as a fragmentation mechanism, because the rotation period is above the critical period for breakup for any reasonable density.
2. Accounting for dust contamination, our best estimate of the absolute magnitude is  $H_V \sim 19.7 \pm 0.7$  corresponding to a nucleus radius  $r_n \sim 0.4 \pm 0.1 \text{ km}$ , assuming an albedo of 0.04.
3. Phase-lagged brightness variations in the coma show that the dust outflow speed is  $v_g = 107 \pm 9 \text{ m s}^{-1}$ , corresponding to average dust particle radius  $\bar{a} \sim 3 \pm 1 \mu\text{m}$ . The mass-loss rate,  $dM/dt \sim 50 \text{ kg s}^{-1}$ , is consistent with sublimation of an exposed, ice patch of radius only  $\sim 0.2 \text{ km}$  corresponding to  $\sim 8\%$  of the nucleus surface.

We thank Jessica Agarwal, Jing Li, Max Mutchler, and the anonymous referee for reading the manuscript and for the comments. This work was supported by the *HST*'s Archival Research Program, proposal #15301 awarded to D.J. Also, A. G. acknowledges her NESSF grant #18-0217 for providing funding to accomplish this work. This work was based on observations made with the NASA/ESA *Hubble Space*

*Telescope*, and obtained from the Hubble Legacy Archive, which is a collaboration between the Space Telescope Science Institute (STScI/NASA), the Space Telescope European Coordinating Facility (ST-ECF/ESA), and the Canadian Astronomy Data Centre (CADC/NRC/CSA).

### ORCID iDs

Ariel Graykowski  <https://orcid.org/0000-0001-9003-0999>

### References

- Asphaug, E., & Benz, W. 1994, *Natur*, **370**, 120
- Boehnhardt, H. 2004, in *Comets II*, ed. M. Festou et al. (Tucson, AZ: Univ. Arizona Press), 301
- Boehnhardt, H., Rainer, N., Birkle, K., & Schwehm, G. 1999, *A&A*, **341**, 912
- Britt, D. T., Consolmagno, G. J., & Merline, W. J. 2006, *LPI*, **37**, 2214
- Burns, J. A., & Tedesco, E. F. 1979, in *Asteroids*, ed. T. Grehels (Tucson, AZ: Univ. Arizona Press), 494
- Crovisier, J., Biver, N., Bockelee-Morvan, D., et al. 1995, *IAUC*, **6227**, 1
- Drahus, M., Küppers, M., Jarchow, C., et al. 2010, *A&A*, **510**, A55
- Dykhuys, M. J., Samarasinha, N. H., Mueller, B. E. A., & Storm, S. P. 2012, *DPS Meeting*, **44**, 314.10
- Fernández, Y. R., Kelley, M. S., Lamy, P. L., et al. 2013, *Icar*, **226**, 1138
- Ford, H. C., Bartko, F., Bely, P. Y., et al. 1998, *Proc. SPIE*, **3356**, 234
- Fulle, M., Della Corte, V., Rotundi, A., et al. 2017, *MNRAS*, **469**, S45
- Fuse, T., Yamamoto, N., Kinoshita, D., Furusawa, H., & Watanabe, J.-I. 2007, *PASJ*, **59**, 381
- Hartmann, W. K., Tholen, D. J., & Cruikshank, D. P. 1987, *Icar*, **69**, 33
- Ishiguro, M., Sarugaku, Y., Ueno, M., et al. 2007, *Icar*, **189**, 169
- Jewitt, D. 1991, in *IAU Coll. 116, Comets in the Post-Halley Era*, ed. R. L. Newburn, Jr., M. Neugebauer, & J. Rahe (Cambridge: Cambridge Univ. Press), 19
- Jewitt, D. 1997, *EM&P*, **79**, 35
- Jewitt, D., Ishiguro, M., Weaver, H., et al. 2014, *AJ*, **147**, 117
- Kokotanekova, R., Snodgrass, C., Lacerda, P., et al. 2017, *MNRAS*, **471**, 2974
- Lamy, P. L., Toth, I., Fernandez, Y. R., & Weaver, H. A. 2004, in *Comets II*, ed. M. Festou et al. (Tucson, AZ: Univ. Arizona Press), 223
- Lisse, C. M., A'Hearn, M. F., Hauser, M. G., et al. 1998, *ApJ*, **496**, 971
- Marzari, F., Rossi, A., & Scheeres, D. J. 2011, *Icar*, **214**, 622
- Nolan, M. C., Harmon, J. K., Howell, E. S., et al. 2006, *BAAS*, **38**, 504
- Reach, W. T., Sykes, M. V., Lien, D., & Davies, J. K. 2000, *Icar*, **148**, 80
- Ryon, J. E., et al. 2019, *ACS Instrument Handbook*, Version 18.0 (Baltimore, MD: STScI)
- Samarasinha, N. H. 2001, *Icar*, **154**, 540
- Sekanina, Z. 1989, *AJ*, **98**, 2322
- Sekanina, Z. 1997, *A&A*, **318**, L5
- Storm, S., Samarasinha, N., Mueller, B., et al. 2006, *BAAS*, **38**, 935
- Toth, I., Lamy, P., Weaver, H., et al. 2006, *BAAS*, **38**, 489
- Toth, I., Lamy, P., & Weaver, H. A. 2005, *Icar*, **178**, 235
- Toth, I., Lamy, P. L., Weaver, H. A., Noll, K. S., & Mutchler, M. J. 2008, *BAAS*, **40**, 394
- van de Hulst, H. C. 1957, *Light Scattering by Small Particles* (New York: John Wiley & Sons)
- Weaver, H. A., Lisse, C. M., Mutchler, M., et al. 2008, *LPICo*, **1405**, 8248